



User Manual

Great care has gone into the manufacture of this product and it should therefore provide you with years of good service when used properly. In the event of product failure within its intended use over the course of the first 3 years after date of purchase, we will remedy the problem as quickly as possible once it has been brought to our attention. In the unlikely event of such an occurrence, or if you require any information about the product, please contact us via our helpline support services, details of which are to be found both in this manual and on the product itself.



PRODUCED IN CHINA FOR:
ALDI STORES LTD. PO BOX 26, ATHERSTONE
WARWICKSHIRE, CV9 2SH

ALDI STORES (IRELAND) LTD.
PO BOX 726, NAAS, CO. KILDARE
Visit us at www.aldi.com

AFTER SALES SUPPORT

812263



+44(0) 1904727501



+353(0) 19022605



support@coreservice.co.uk

MODEL:
GLS36K

03/2022

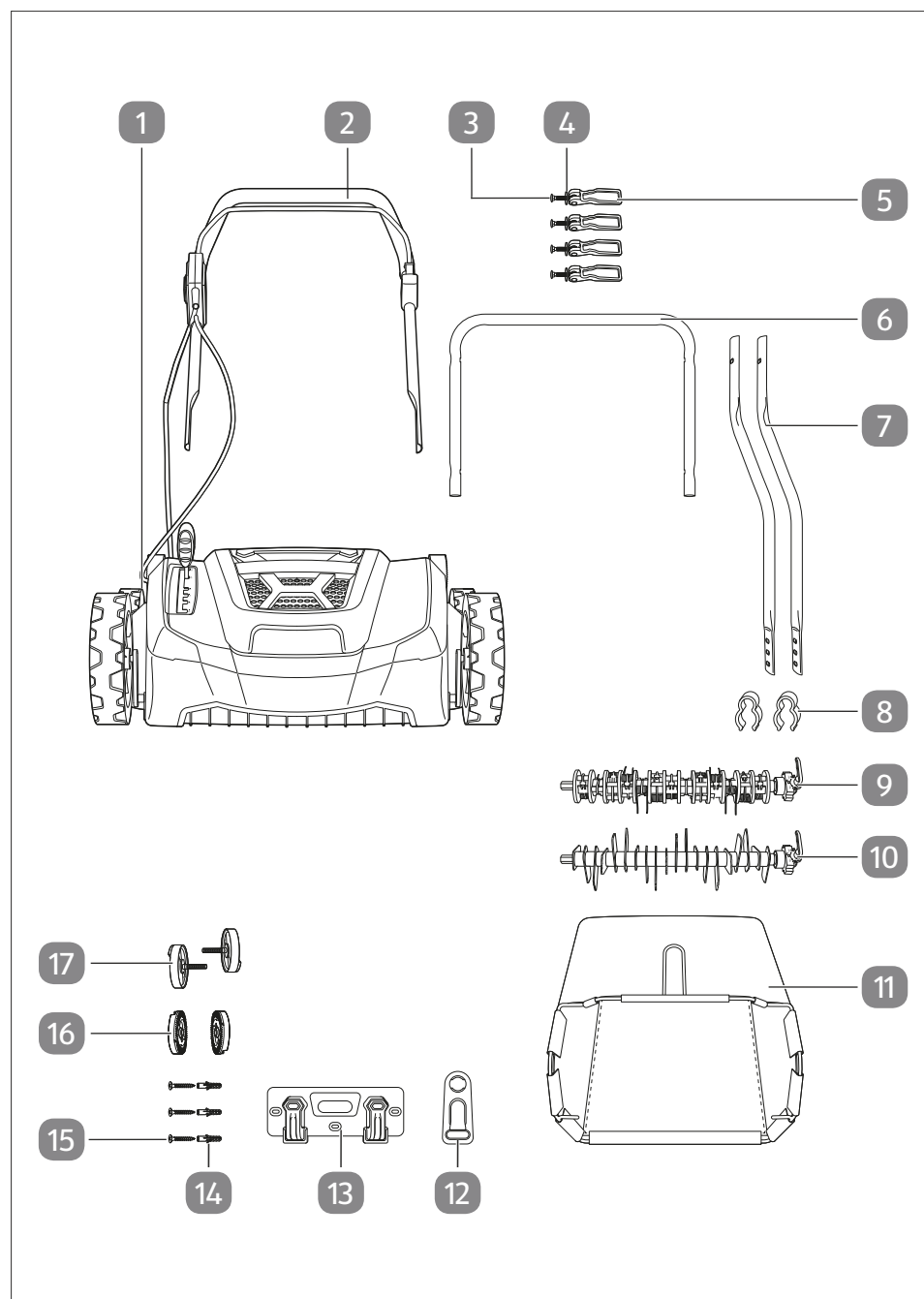
3
YEAR
WARRANTY

FERREX®

ELECTRIC SCARIFIER



Original User Manual



Package contents

- | | |
|----------------------|---|
| 1 Device | 10 Scarifier roller (installed in device) |
| 2 Handlebar | 11 Collecting bag |
| 3 Screw (x4) | 12 Strain relief |
| 4 Washer (x4) | 13 Mounting bracket |
| 5 Quick release (x4) | 14 Screw anchor (x3) |
| 6 Connecting tube | 15 Screw for mounting bracket (x3) |
| 7 Rod (x2) | 16 Toothed washer "R" + "L" |
| 8 Cable clamp (x2) | 17 Adjusting screw (x2) |
| 9 Aerator roller | User manual and warranty card (not shown) |

Table of content

Overview.....	2
Package contents.....	3
General information.....	5
Reading and storing the operating manual.....	5
Proper use.....	5
Explanation of symbols.....	6
Safety.....	7
Safety notes.....	8
Safe handling instructions.....	9
Notes on the power cable.....	9
Before first use.....	13
Check the device and scope of delivery.....	13
Attaching the handlebar.....	14
Operation.....	16
Controls.....	16
Notes on scarifying.....	17
Selecting/exchanging a roller.....	18
Adjusting the working depth.....	18
Adjusting the handlebar height.....	19
Attaching the collecting bag.....	20
Preparing for operation.....	20
Switching the motor on and off.....	21
Emptying the collecting bag.....	21
Cleaning.....	22
Cleaning and inspection after each use.....	22
Maintenance.....	23
Spare parts.....	23
Storage.....	24
Troubleshooting.....	25
Technical data.....	27
Declaration of conformity.....	28
Disposal.....	29

General information

Reading and storing the operating manual



This user manual is part of the electric scarifier (hereinafter also called "device"). It contains important information on how to set up and use the device.

Before using the device, read the operating manual carefully, in particular the safety instructions. Failure to follow this operating manual may lead to severe injuries or product damage.

This user manual is based on the standards and regulations that are valid within the European Union. Outside the EU, please also note the country-specific directives and laws.

Keep this operating manual for future reference. If you pass this device on to a third party, you must also supply this operating manual.

Proper use

The device is exclusively designed to scarify and aerate lawns.

This device is intended for private use only and is not suitable for commercial use. Use the device only as described in this operating manual. Any other use is improper and may lead to product damage or even personal injury. This device is not a toy.

The manufacturer or retailer assume no liability for damage caused by improper or incorrect use.

Explanation of symbols

The following symbols and signal words are used in this user manual, on the device or on the packaging.



This symbol provides you with useful additional information on handling and use.



Declaration of conformity (see chapter “Declaration of conformity”): Products marked with this symbol meet all the applicable Community regulations of the European Economic Area.



This symbol indicates that the device complies with the protection class II.



Read the instruction manual



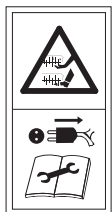
Wear goggles.



Wear hearing protection.



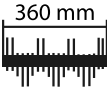
Keep your distance



Caution - sharp prongs! Keep fingers and feet away. Pull mains plug before carrying out maintenance, adjusting and cleaning work or in the case of damage to or twisting of the power supply cable.



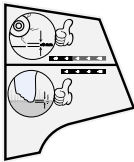
Keep the connecting cable away from the blades.



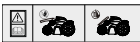
The working width of the roller is approx. 360 mm.



The symbol shows the maximum sound power level L_{WA} .



Tines of the fan roller should not touch the ground, but end about 3 mm above the ground. Use the +3 or -3 height adjustment as needed. The blades of the blade roller should cut about 3 mm into the ground. Adjust the height setting to the wear of the blades.



Never use without the catcher box with the deflector flap open! Close the impact flap when using without the catcher bag.

IPX4

The device is protected from all sides against water splashes.

Safety

The following signal words are used in this operating manual.

⚠ WARNING!

This signal symbol/word denotes a hazard with an average risk level that could lead to death or severe injury if it is not avoided.

⚠ CAUTION!

This signal symbol/word denotes a hazard with a low risk level that could lead to mild or moderate injury if it is not avoided.

NOTE!

This signal word provides a warning about potential material damage.

Safety notes

⚠ WARNING!

Risk of electric shock!

Improper handling of the device, faulty electric installation or excessively high mains voltage may result in an electric shock.

- Only connect the device to a properly installed socket. The mains voltage must match the value indicated on the rating plate.
- In the case of a fault, immediately disconnect the device from the power cable and/or mains.
- Do not connect the device if the device, power cable or a mains plug shows visible signs of damage.
- Damaged power cords and devices must only be repaired by the manufacturer, their customer service or a qualified professional.
- Do not open the housing under any circumstances and never insert any object in the housing.
- Always disconnect the device from the mains before cleaning or servicing it.
- Never touch the mains plug with damp hands.
- Do not immerse the device, power cable or mains plug in water or other liquids.
- Do not bend the power cable and do not pass it over sharp edges.
- Never move the device over the power cable.
- The device must be supplied via a residual current protection device (RCD) with a rated residual current of no more than 30 mA.

▲ WARNING!**Risk of explosion!**

The roller of the scarifier or ejected objects can cause sparks when hitting metal. These sparks can ignite flammable liquids, gases or dust.

- Do not use the scarifier in environments with a risk of explosion through flammable liquids, gasses or dust.

Safe handling instructions

Switch the motor off and pull the plug out of the socket. Make sure that all moving parts have stopped completely.

- whenever you step away from the device;
- before remedying blockages or removing clogging in the discharge chute;
- before inspecting, cleaning or working on the device;
- after hitting a foreign object. Look for damage on the device and carry out the necessary repairs before starting again and working with the device.

If the device starts vibrating heavily, you must inspect it immediately.

- Check for damage.
- Repair any damaged parts.
- Make sure that all nuts, bolts and screws are tight.

Notes on the power cable

- Use only authorised power cables of type H05VV-F or H05RN-F.
- They must be approved for outdoor use.
- The length shall not exceed 50 m.
- The power cable wire cross section must be at least 1.5 mm².
- Always completely unroll cable drums before use.
- Check the cable for damage.

⚠ WARNING!

Risk of injury for persons with impaired mobility or lack of experience and expertise!

Improper handling of the device can lead to severe injuries or damage to the device.

- Do not leave the device unattended when in use.
- Do not allow others to handle the device until you have read and understood this operating manual or until you have been instructed about its intended use and the associated risks.
- Never leave persons with physical, sensory or mental impairments (such as children or drunk people) or persons lacking experience and expertise (such as children) unattended in proximity of the device.

⚠ CAUTION!

Risk of injury!

Improper use of the device can lead to injuries.

- The roller is sharp. Wear protective gloves and be especially careful when working near the roller.
- Do not reach underneath the device or into the discharge opening.
- Only work in good lighting conditions or provide appropriate artificial lighting.
- Do not operate the device when other persons or animals are around.
- Do not operate the device if you are impaired (e.g. under the influence of drugs, alcohol, medication, or if you are tired).
- Wear sturdy shoes, long trousers and hearing protection.
- Watch out for the power supply cable as you might trip over it and lose control of the device.

- Avoid working on wet grass. You might slip and lose control of the device.
- Do not use the device during rain or a thunderstorm.
- Do not work on areas with an inclination of more than 20% as you might slip and lose control of the device.
- Always keep the discharge flap closed and keep away from the discharge opening when operating the device without a collecting bag.
- Wait until the roller has stopped turning before removing any blockage or clogging and carrying out any other work on the device.
- Wear gloves when exchanging the roller to avoid injuries.

Rules of operation

The following rules must be observed at all times when working on and with the device:

- Only adjust the device or rectify faults when the device stands still. Make sure that the device cannot start up.
- Only lift the device on the handle and the strut. Never reach underneath the device to lift it.
- Let the roller coast to a stop before touching the device.
- Never reach beneath the discharge flap or into the discharge opening.
- Stop the motor immediately if you notice unusual scarifying sounds or vibrations. Check and rectify cause of the fault before you continue scarifying.
- Never put a damaged device into operation. Any damage to the roller and the device must be repaired by the manufacturer's customer service or qualified personnel.
- Only scarify diagonally to inclinations.

Safety

- Never operate the device with faulty safety devices/covers or without safety devices.

Before first use

Check the device and scope of delivery

NOTE!

Risk of damage!

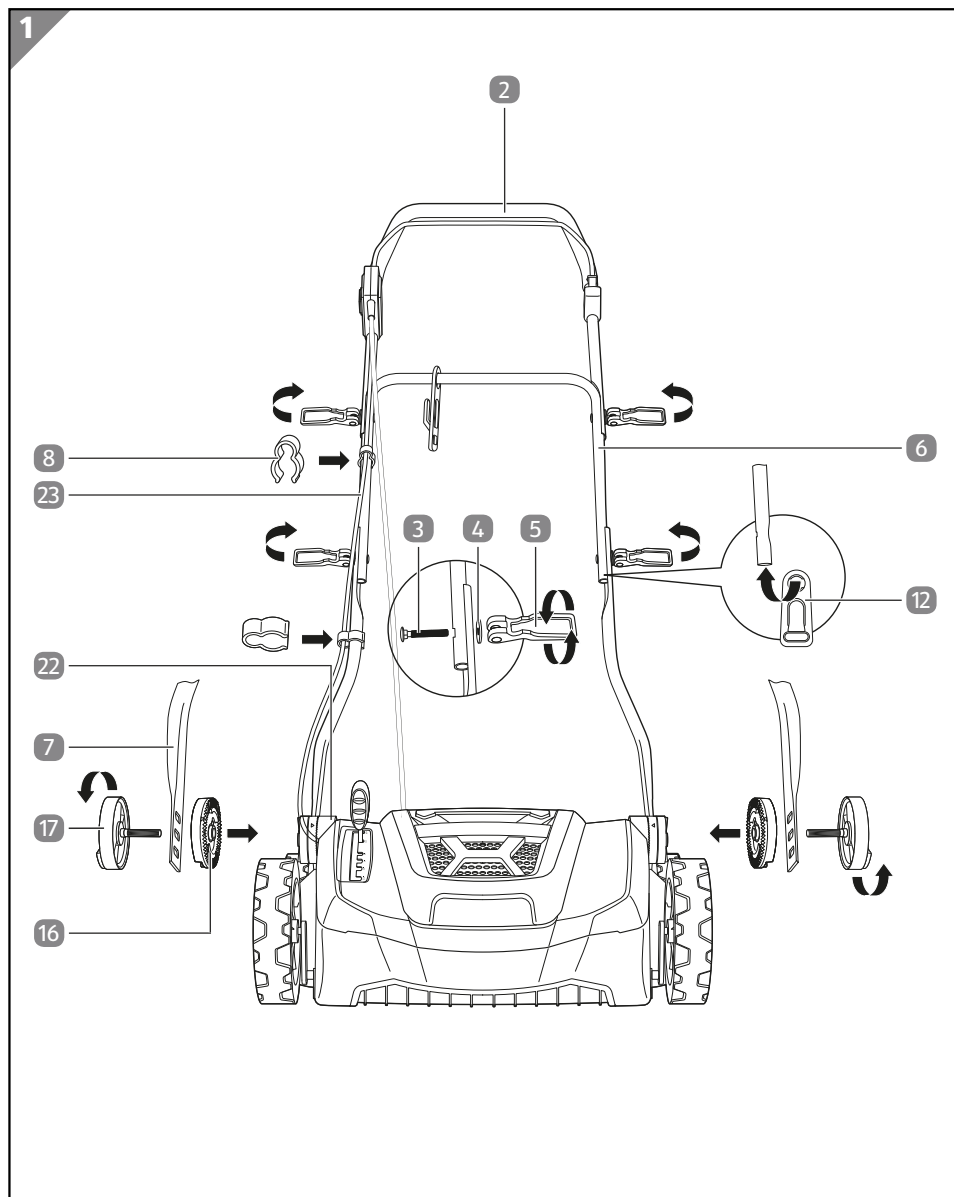
If opening the packaging with a sharp knife or other pointed objects, careless handling can damage the device.

- Therefore, be very careful when opening.

1. With both hands, lift the device out of the packaging.
2. Check that the delivery is complete (see chapter “Package contents”).
3. Inspect the device and individual parts for damage. Do not operate a damaged device; instead, contact the manufacturer via the service center listed on the warranty card.

Before first use

Attaching the handlebar



1. Place the toothed washers **16** on the fixtures **22**.

Use the toothed washer **16** with the letter "R" for the right side and the one with the letter "L" for the left side.

Make sure that the triangular markings of the toothed washers are positioned in line with the three line markings on the fixtures.

2. Place one rod **7** on each toothed washer.

Make sure that the plastic cogs of the toothed washer reach into the holes in the rods.

Make sure that the bends of the rods point inwards.

3. Guide the adjusting screws **17** through the boreholes of the rods and toothed washers into the fixtures and tighten them clockwise.

Both rods are attached.

4. Push the strain relief **12** onto the connecting tube **6**.

5. Align the connecting tube with the rods so that the bore holes are on top of each other.

6. Push two screws **3** through the bore holes so that the heads point inwards and the threads outwards.

7. Place a washer **4** on each screw.

8. Twist one quick release **5** clockwise onto each screw.

9. Twist the quick releases onto the thread until they are at a distance of approx. 5 mm from the rod.

10. Fold up the quick releases so that they fit flush on the connecting tube.

11. Align the handlebar **2** with the connecting tube so that the bore holes are on top of each other.

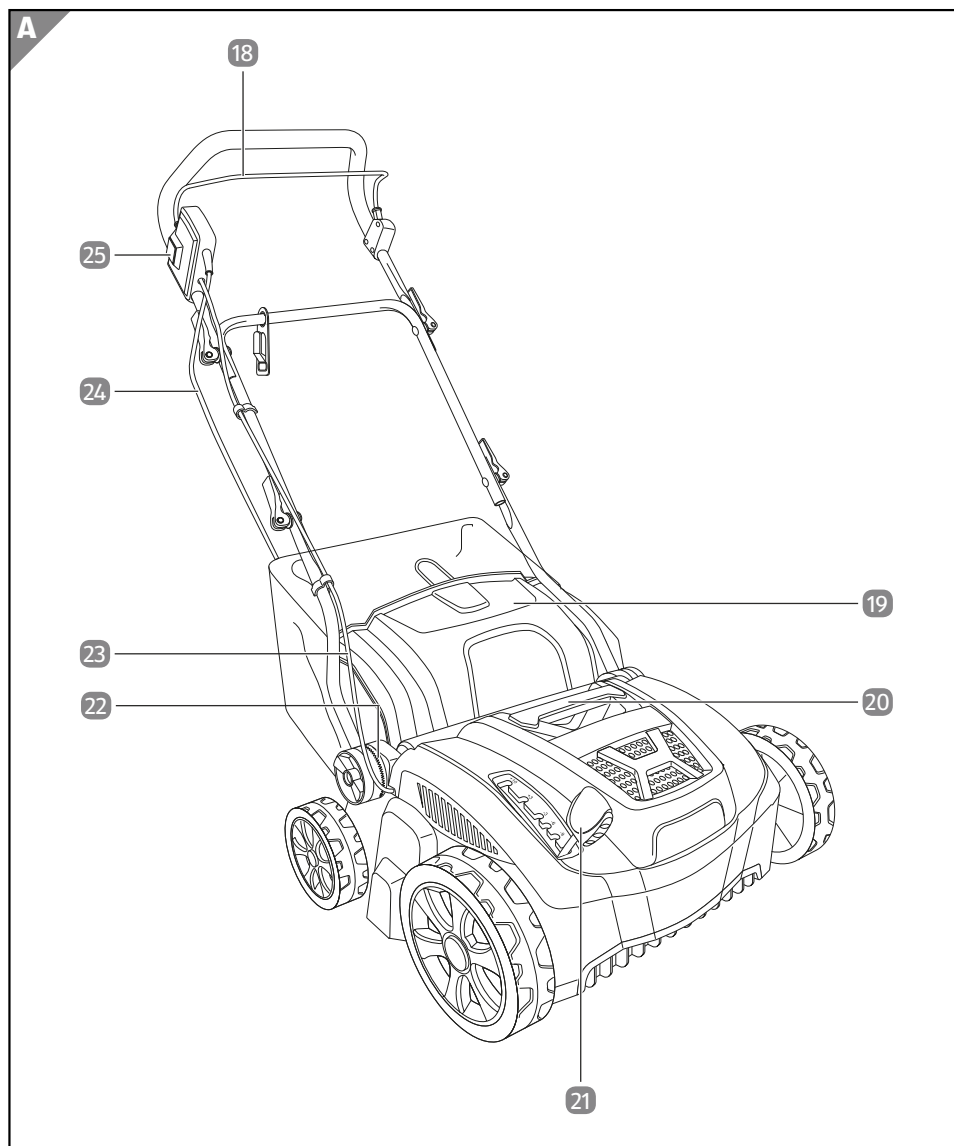
12. Connect the handlebar with the connecting tube by also installing two screws, nuts and quick releases here.

13. Fix the power cable **23** with the two cable clamps **8** to the handlebar.

The handlebar is attached.

Operation

Controls



18 Safety bar

19 Discharge flap

20 Carry handle

21 Height adjustment

22 Fixture (x2)

23 Power cable

24 Mains connection

25 Start button

Notes on scarifying

The following instructions help you use the device effectively and safely. Improper handling of the device can cause damage to it.

- Check the ground on which you want to use the device. Remove stones, twigs, wires, bones, and other foreign objects that could be caught up and flung out.
- Always work in a direction facing away from the power supply cable.
- Always push the device forward; pulling the device might damage the power supply cable. Always work in a direction facing away from the power supply cable.
- Observe the local regulations for the working times with garden appliances.



Lawns develop a thatch layer consisting of blades of grass, shoots or moss over time. Also, the sod compacts over time, which impairs the water absorption capacity of the soil. This is why you should scarify your lawn twice a year. We recommend doing so in spring as soon as the ground is no longer frozen. A second scarification in late summer leaves enough regeneration time before winter. Heavily thatched grass should be scarified lengthwise and diagonally.



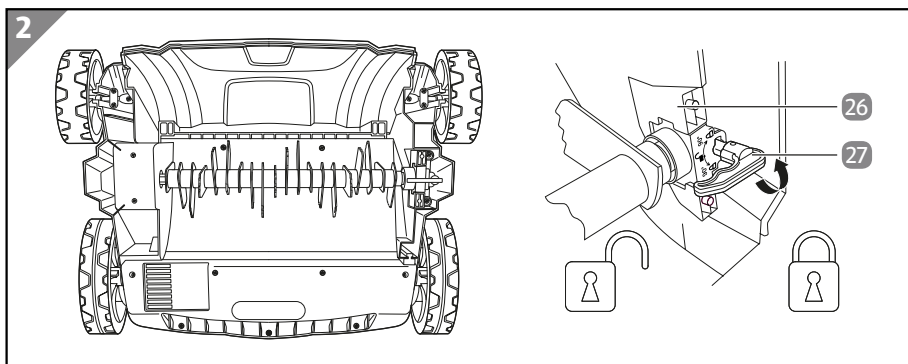
You can also aerate the lawn if desired. Mow the lawn beforehand. After each run with the scarifier, ensure sufficient watering so that the exposed sod does not dry out.

Operation

Selecting/exchanging a roller

9 Aerator roller: Use this roller if you want to remove moss or thatch and collect it in the collecting bag **11**.

10 Scarifier roller: Use this roller for regenerating lawn care.



1. Place the device on a level and dry surface.
2. Make sure that the device is disconnected from the power supply.
3. Turn the device bottom up.
4. Pull out the lever **27**.
5. Turn the lever to the position "Lock open".
6. Push the roller out.
7. Remove the roller.
8. Now insert the desired roller into the device so that it fits into the mount **26** and push it to the left.
9. Turn the lever by 90° in any direction to fix the roller in place.

The roller is exchanged.

Adjusting the working depth

NOTE!

Risk of damage!

If the working depth has been wrongly set, the roller or the soil can become damaged.

It is useful to adjust the height adjustment when you want to transport the scarifier. The height adjustment also lets you set the working depth for your lawn. At the time of delivery, the scarifier is set to a working depth of 3 mm ("+ 3").

- Set the height adjustment **21** to position "+ 10" (parked position/ transport position) to transport or park the device.
- Set the working depth to the desired position to carry out the following work with the device:

- **Scarifying (scarifier roller)**

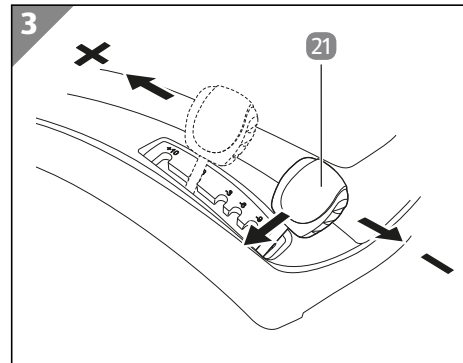
When scarifying, the roller should cut 3 to 5 mm into the soil. Deeper penetration harms the sod.

- Position "- 3" with new roller
- Position "- 6" with slightly used roller
- Position "- 9" / "- 12" for readjusting with increasing wear, indicated by visible notches on the roller blade.

- **Aerating (aerator roller)**

- Position "- 3" in case of slight to average thatching
- Position "- 6" in case of heavy thatching

The aerator roller must never be operated in the positions "- 9"/"- 12". This can lead to substantial damage to the sod, the aerator roller and the device.

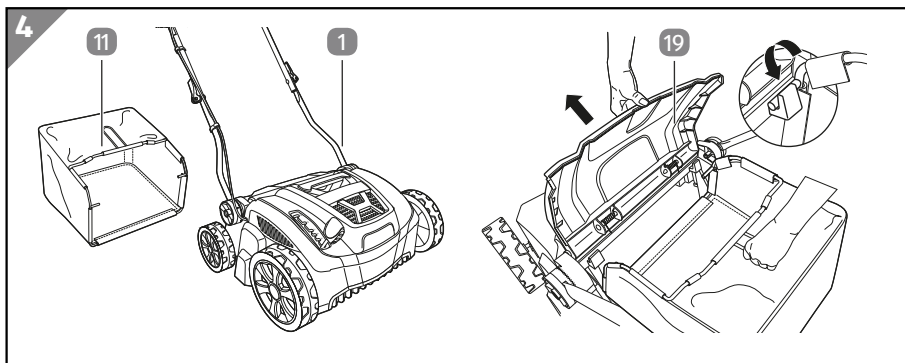


Adjusting the handlebar height

1. Turn the adjusting screws **17** 3-4 turns counter-clockwise.
2. Move the handlebar **2** to the desired height (top, centre or lowest setting).
Make sure that the handlebar is set to the same setting on both sides.
3. Tighten the adjusting screws clockwise.

The handlebar height is set.

Attaching the collecting bag



1. Lift the discharge flap **19**.
2. Hang the collecting bag **11** into the device **1**.

The device is completely mounted.



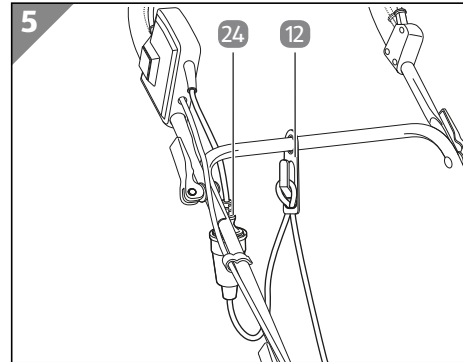
Alternatively, you can also use the device without the collecting bag. In this case, the plant scraps removed from the roller remain on the ground and can be removed or spread on the lawn as mulch, depending on their composition.

Preparing for operation

Use one power supply cable that is long enough to allow you to mow the entire lawn. Avoid using several extension cables.

1. Check the device, the collecting bag and the blade before connecting the power supply.
2. Set the desired working height before connecting the power supply.
3. Check the handle position (height) and correct it if necessary to work comfortably.
4. Lay out the power supply cable all along the perimeter of your lawn.

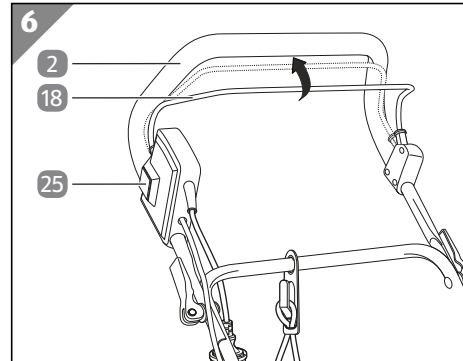
5. Secure the power supply cable on the strain relief **12**.
6. Connect the power supply cable to the mains connection **24**.
7. Plug the power supply cable plug into a properly installed socket.



Switching the motor on and off

The motor is activated with a safety switch. When you let go of the safety bar, the motor stops. Only turn on the motor on the grass.

1. Place the device on the grass.
2. Press and hold the ON/OFF switch **25**.
3. Pull the safety bar **18** towards the handlebar **2**.
The motor starts.
4. Let go of the start button and keep the safety bar pressed to the handle as long as you want to keep the motor running.



To stop the motor, let go of the safety bar.

Caution: the roller might continue to keep turning. Wait until the roller stands still before working on the device.

Emptying the collecting bag



The cuttings (thatch and moss) make excellent compost materials. Mix the grass and moss cuttings with other garden waste (e.g. brushwood) so that these don't mat together.

1. Stop the motor and wait until the roller stands still.
2. Lift the discharge flap **19**.
3. Lift the collecting bag **11** off the device.
Slightly lifting the collecting bag releases it.

Operation

4. Hold on to the discharge flap and move it until the discharge chute is covered again.
Do not simply let go; the discharge flap may get damaged due to the spring action.
5. Empty the collecting bag completely and make sure that it is not damaged.
Clear the lawn thatch material off the fabric as best as possible so air can flow properly through the fabric.
6. Attach the collecting bag (see section "Attaching the collecting bag")

Cleaning

WARNING!

Risk of electric shock!

Moisture in the device may cause a short circuit or electric shock.

- Before cleaning, disconnect the power cable from the socket.
- Make sure that no water or other liquid gets inside the housing.
- Never clean the device with running water (e.g. a garden hose).

NOTE!

Improper cleaning can damage the device.

- Do not use any harsh cleaning products, brushes with metal or nylon bristles, or sharp or metallic cleaning materials such as knives, hard scrapers or similar. They can damage the surfaces.
- Remove thatch and moss immediately. Residues of wet thatch on and in the device can harden and cause mould.

Cleaning and inspection after each use



Regular cleaning and inspection is necessary to keep the device in perfect state.

1. Stop the motor and wait until the roller stands still.

2. Disconnect the device by unplugging the power cable and remove the power cable from the strain relief **12**.
3. Thoroughly empty the collecting bag **11** (see "Emptying the collecting bag"). Do not reattach it to the device.
4. Remove thatch etc. from the device and the collecting bag with a hand broom and check the collecting bag for damage.
5. Tip the device on its side and remove thatch from the discharge chute and roller compartment with a hand brush or a brush.
6. Check the roller for damaged spots and wear.
Do not use the device with a damaged roller! Exchange the roller if necessary (for the roller type see "Spare parts list").
7. Place the device upright again.
8. Check all connections (handlebar, collecting bag) for tight fit.

The device is ready for storage.

Maintenance

Apart from the measures described in the section "Cleaning and inspection after each use", the device is basically maintenance-free. You do not have to lubricate or readjust any parts.

In addition, check the following once a year:

- Free wheel movement.
- Function and free movement of the height adjuster **21**.
- Function and free movement of the discharge flap **19**.
- Damage on the device (such as broken housing parts or worn collecting bag **11**).

If you detect any defects, contact customer service or a specialist workshop. Do not operate the device with a detected defect.

Spare parts

Contact the manufacturer via the service centre stated on the warranty card if you need spare parts.

Part description	Part number
Set of quick release fasteners	3 , 4 , 5
Aerator roller	9
Wall mount with screw anchors and screws	13 , 14 , 15
Scarifier roller	10
Cable clamp (x2)	8

Spare parts

Part description	Part number
Collecting bag	11
Strain relief	12
Front wheel assembly set	n/a
Rear wheel assembly set	n/a

Storage

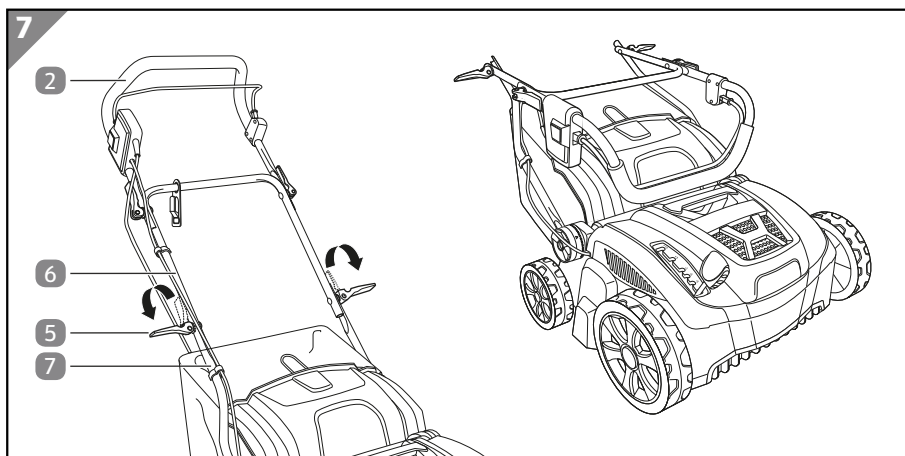
NOTE!

Improper storage of the device can result in damage.

- Let the device dry before storing it. Residual moisture and cuttings remaining in the device can lead to mould formation.

Folding in the handlebar

Optionally, the handlebar 2 can be folded in to save space during storage or transport.



1. Undo the quick releases 5 between the connecting tube 6 and the bars 7.
2. Fold the handlebar forward so that it rests on the device.
3. You can make additional adjustments with the quick releases on the handlebar.

Storage conditions

- Thoroughly clean the device (see “Cleaning”).
- Store the device in a clean, dry, frost-protected place out of the reach of children.
- Store the device in a location away from sunlight and other heat sources.
- Always store device parts and accessories together with the device.
- Store the device and accessories at a temperature between +5 °C and +20 °C.

Hanging up the device

Use the supplied mounting bracket **13** if you want to hang up the device.

1. Use a suitable spot on the wall for hanging up the device. The area should be dry and well aired.
2. Make sure that the wall is sturdy enough.
3. Position the mounting bracket on the wall.
4. Attach the mounting bracket with the screws **3** and screw anchors **14**.
5. Suspend the scarifier in the mounting bracket by the crossbar of the connecting tube.

Transport instructions

- Always transport the device with the handle folded in.
- Only lift the device by the carry handle **20**.
- Exclusively transport the device in normal position; prevent tilting while transporting.
- When transporting the device in vehicles, the device must be secured in accordance with the applicable regulations (load securing).

Troubleshooting


Problem	Possible cause	Remedy
Motor does not start up or stutters	The power cable is not correctly plugged in.	Check the plug connection on the device and on the extension cable for tight fit.
	The mains connection is defective	Check the line and the fuse.
	The power cable is defective.	Check the power cable.
	The switch is defective.	Contact customer service.
	The connections on the motor have come undone.	Contact customer service.
	The device housing is clogged.	Change the working depth and clean the housing.

Troubleshooting

Problem	Possible cause	Remedy
The engine power is failing.	The ground is too hard.	Adjust the working depth.
	The device housing is clogged.	Clean the housing.
	The roller is worn.	Exchange the roller.
The scarifying result is not satisfactory.	The roller is worn.	Exchange the roller.
	The working depth is wrongly adjusted.	Adjust the working depth.
	The lawn is too high.	Mow the lawn.
The motor runs but the roller does not.	The toothed belt is torn.	Contact customer service.
The device is very loud.	Individual parts are not correctly installed and/or screws are loose.	Check the individual parts for correct assembly and tighten loose screws.
The device rattles.	Foreign objects on the roller are knocking against the housing.	Remove the foreign objects.

If the problem persists, contact the customer service listed on the last page.

Technical data

Model	GLS36K
Item number	812263
Rated voltage/frequency:	230–240 V~/50 Hz
Rated power:	1500 W
Protection class:	II 
IP rating:	IPX4
Idle speed:	3500 min ⁻¹
Weight (net):	approx. 13.7 kg
Working width:	360 mm
Working depth (mm):	-12, -9, -6, -3, +3, +10
Collecting bag volume:	45 l
Guaranteed sound power level L_{wa} :	95 dB(A)
Sound power level L_{wa} :	92.99 dB(A)
Measurement uncertainty K_{wa} :	1.55 dB(A)
Sound pressure level L_{pa} :	81 dB(A)
Measurement uncertainty K_{pa} :	3 dB(A)
Vibration emission value:	4.345 m/s ²
Measurement uncertainty K	1.5 m/s ²

The noise and vibration values were determined in accordance with EN 50636-2-92:2014.

The vibration emission values during actual use of the device may deviate from the declared values. This depends on how the tool is used.

Users must take all safety precautions to protect themselves. They must consider all influences of the actual application conditions (especially all parts of the work cycle such as running times, idling times and times at which the machine is shut off). The vibration values may deviate from the stated total output depending on the actual use of the device.

Suitable measures include regular maintenance and servicing of the device, keeping your hands warm, taking regular breaks and properly planning the work sequences!

Declaration of conformity

Declaration of conformity

Original EU Declaration of Conformity

We,

MEROTEC GmbH
Otto-Brenner-Str. 8, D-47877 Willich, Germany

herewith declare under our own, sole responsibility that our product

Electric Scarifier
Model no. GLS36K

complies with the following directives:

2006/42/EC Machinery Directive
2014/30/EU EMC-Directive
2000/14/EC Outdoor Noise Directive, amended by 2005/88/EC
Measured sound power level $L_{WA} = 92,99 \text{ dB(A)}$ ($K = 1,55 \text{ dB(A)}$)
Guaranteed sound power level $L_{WA} = 95 \text{ dB(A)}$
2011/65/EU*) RoHS-Directive, amended by (EU) 2015/863

Applied harmonized standards:

EN 60335-1:2012+A11+A13+A14+A2
EN 50636-2-92:2014
EN 55014-1:2017
EN 55014-2:2015
EN 61000-3-3:2013
EN 61000-3-2:2014
EN IEC 63000:2018

Document representative:
Dirk Wohlrab
MEROTEC GmbH
Otto-Brenner-Str. 8
D-47877 Willich



Place, date: Willich, 28.09.2021

Authorised Signature:

A handwritten signature in dark ink, appearing to read 'Ronald Menken', written over a horizontal line.

Ronald Menken
General Manager
MEROTEC GmbH

*)The object of the declaration described above is in conformity with Directive 2011/65/EU of the European Parliament and of the Council of 8 June 2011 on the restriction of the use of certain hazardous substances in electrical and electronic equipment.

Disposal

Disposing of packaging



Dispose of packaging according to type. Sort the paperboard and cardboard as waste paper and the film as recyclable material.

Dispose of old electrical device



This symbol indicates that this product may not be disposed of together with domestic waste in compliance with the (2012/19/EU) Regulation pertaining to waste electrical and electronic devices (WEEE). This product must be handed in at a collection point intended for the purpose. This can occur, for example, by handing it in at an authorised collecting point for the recycling of waste electrical and electronic equipment. Owing to potentially hazardous substances that are frequently contained in waste electronic equipment, incorrect handling of waste equipment may have a negative impact on the environment and on the health of human beings. By disposing of this product correctly, you are also contributing towards an efficient use of natural resources. Information on collecting points for waste equipment can be obtained from your local authority, an authorised institution for the disposal of waste electrical and electronic equipment or the waste collection services.